



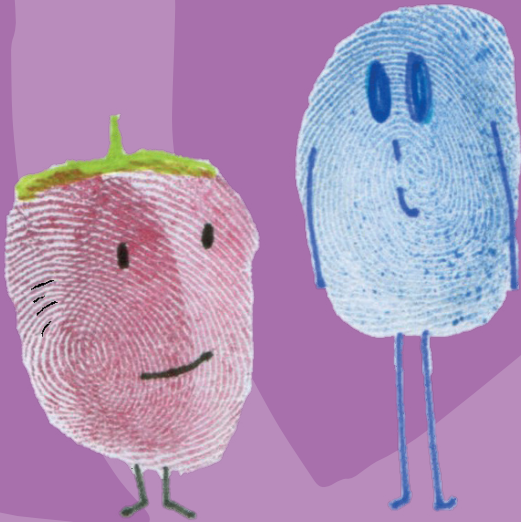
Anna Freud
National Centre for
Children and Families



We're talking mental health in our school

We are:

- ★ watching the Talking Mental Health animation
- ★ learning what our mental health is
- ★ learning how to talk about mental health
- ★ learning how to be good listeners



Find out more: www.annafreud.org

Our Patron: **Her Royal Highness The Duchess of Cambridge**

Anna Freud National Centre for Children and Families is a company limited by guarantee, company number 03819888, and a registered charity, number 1077106.